

Raash Trail Map

Directions

From the Visitor Center:

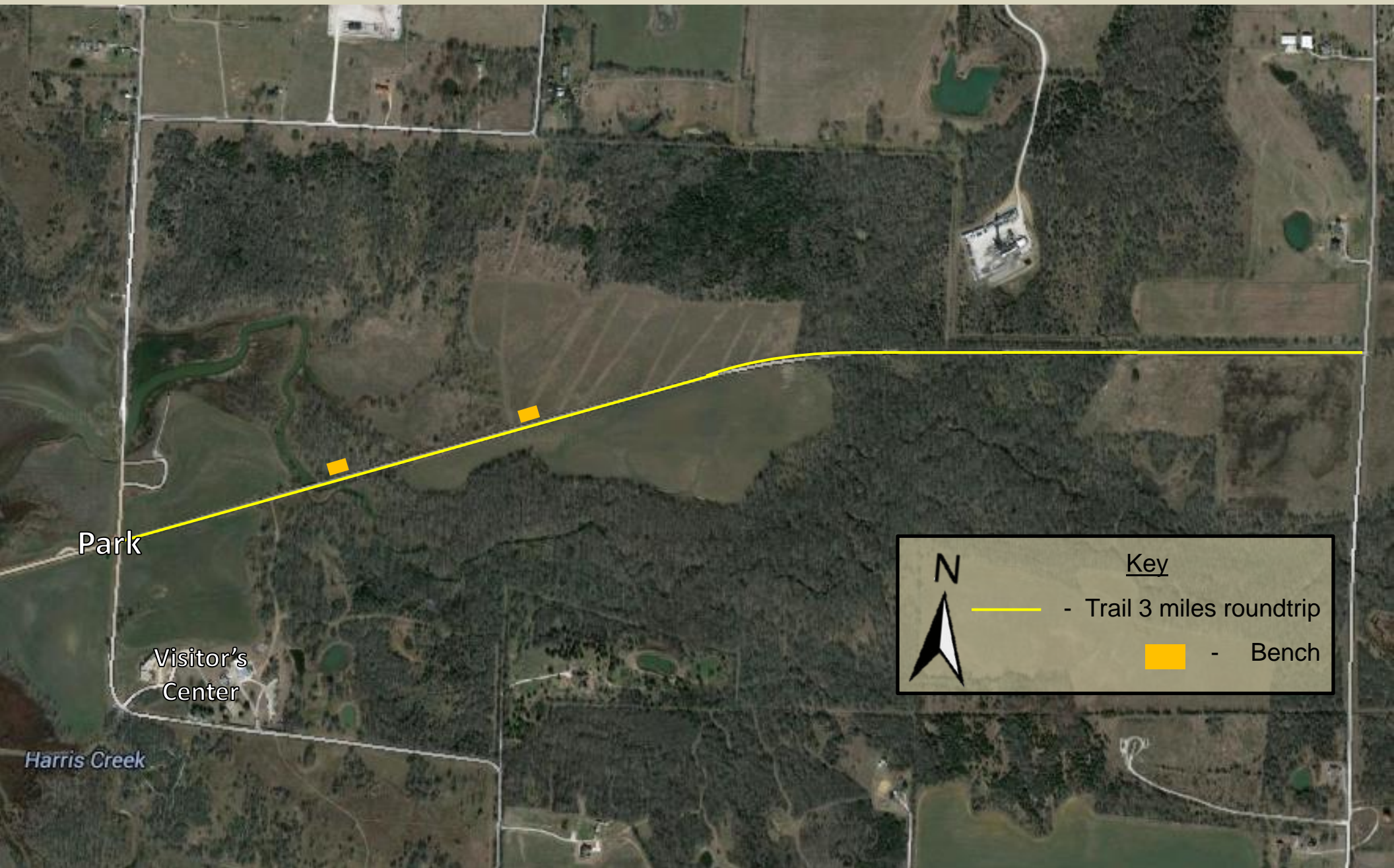
Take a right out of the driveway onto Refuge Road.

At 3-way intersection, parking is on the right.

Hagerman National Wildlife Refuge

6465 Refuge Road
Sherman, Texas 75092-5817
(903) 786-2826

www.fws.gov/refuge/hagerman




Park


Visitor's
Center


Harris Creek

N



Key

 - Trail 3 miles roundtrip

 - Bench