



Harris Creek Trail Map


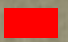
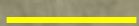
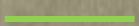
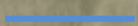
Hagerman National Wildlife Refuge

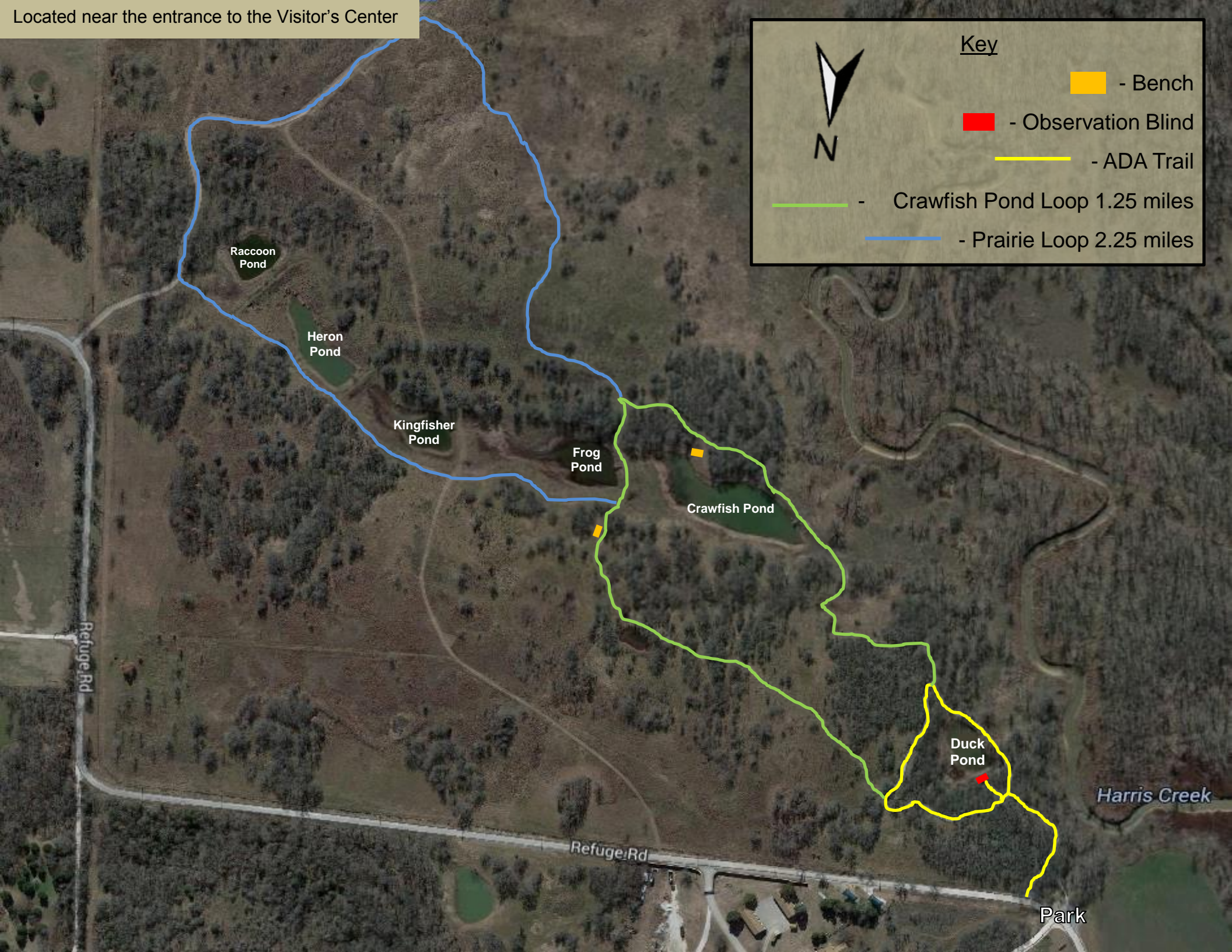

6465 Refuge Road
Sherman, Texas 75092-5817
(903) 786-2826

www.fws.gov/refuge/hagerman

Located near the entrance to the Visitor's Center

Key

-  - Bench
-  - Observation Blind
-  - ADA Trail
-  - Crawfish Pond Loop 1.25 miles
-  - Prairie Loop 2.25 miles



Raccoon Pond

Heron Pond

Kingfisher Pond

Frog Pond

Crawfish Pond

Duck Pond

Harris Creek

Refuge Rd

Refuge Rd

Park